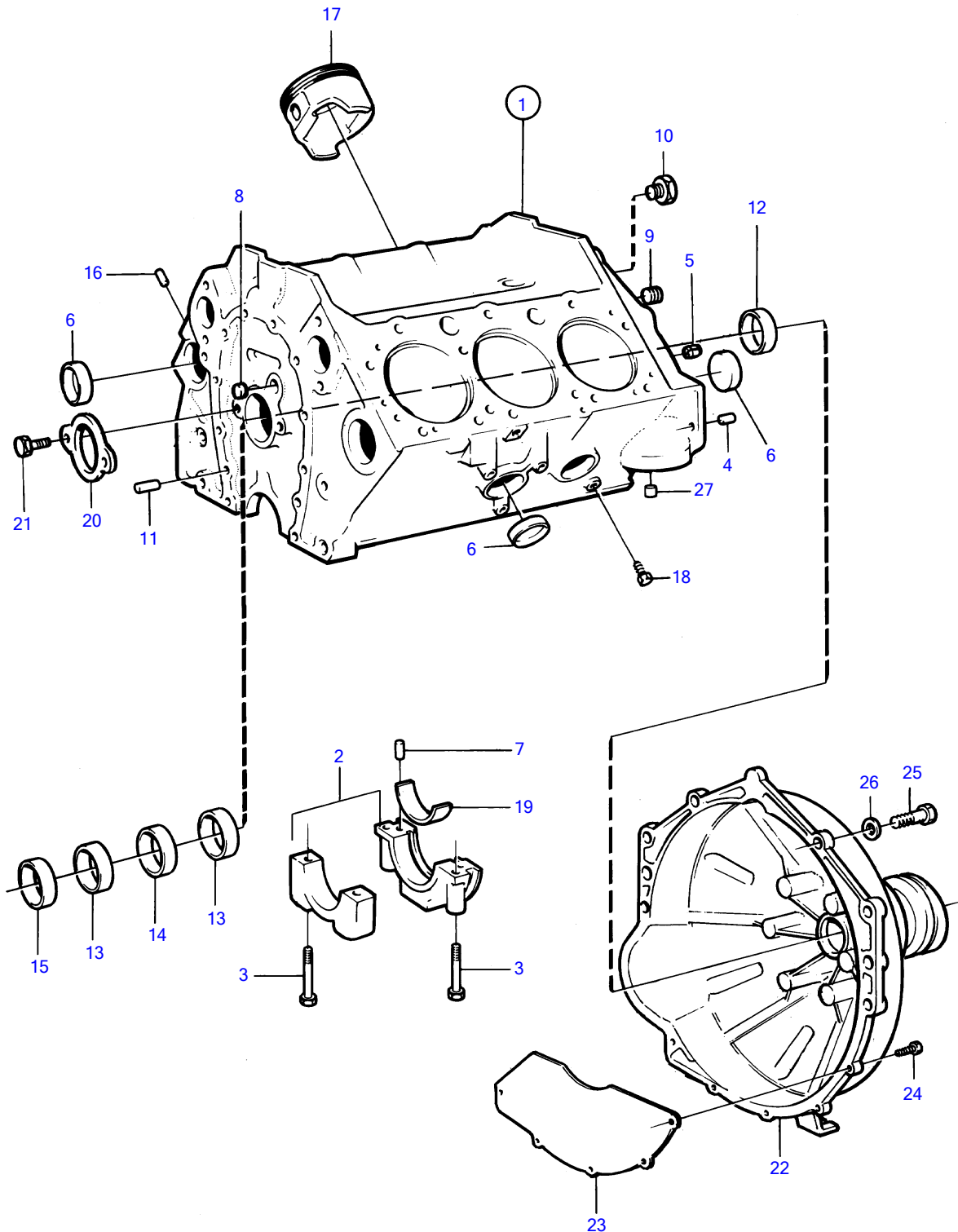


432A, 434A



11409

432A, 434A

REF	PART NO.	QTY	DESCRIPTION	SEE SEC.	NOTES
1		1	cylinder block		Included in basic engine, See group 10A
2		4	• bearing cap		
3	835037	8	• Screw		
4	(818989)	2	• Locating pin		Obsolete part
5	855828	1	• Locating pin		
6	835039	8	• Expansion plug		
7	835040	2	• Locating pin		
8	856230	4	• Plug		
9	968145	4	• Plug		
10	952075	1	• Plug		
11	835040	2	• Locating pin		
12	835496	1	• Expansion plug		
13	841423	2	• Bushing	12456	
14	841424	1	• Bushing	12456	
15	841422	1	• Bearing	12456	
16	835497	4	• Locating pin		
17		6	• piston	12449	
18	192134	3	• Plug		
19		3	• main bearing kit	12449	
20	(856408)	1	Retainer		Obsolete part
21	856409	2	Screw		
22	872113	1	Flywheel housing		
23	854939	1	Cover plate		
24	947224	5	Hexagon screw		
25	955536	6	Hexagon screw		
26	942336	6	Spring washer		
27	841737	1	Valve		